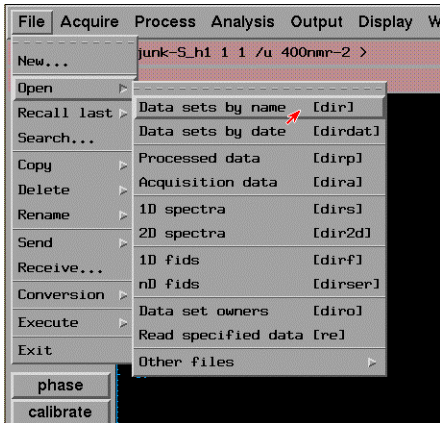
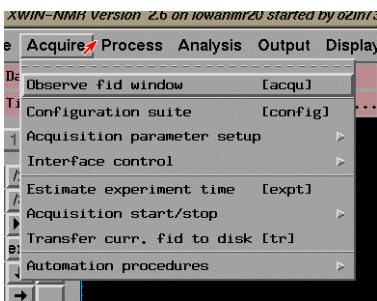


# Tuning the Probe for $^{13}\text{C}$ & “X” Nuclei on DRX-400

\\w~\p~\nrm\drx400\tune13c.doc 26-Mar-00 j.Snyder

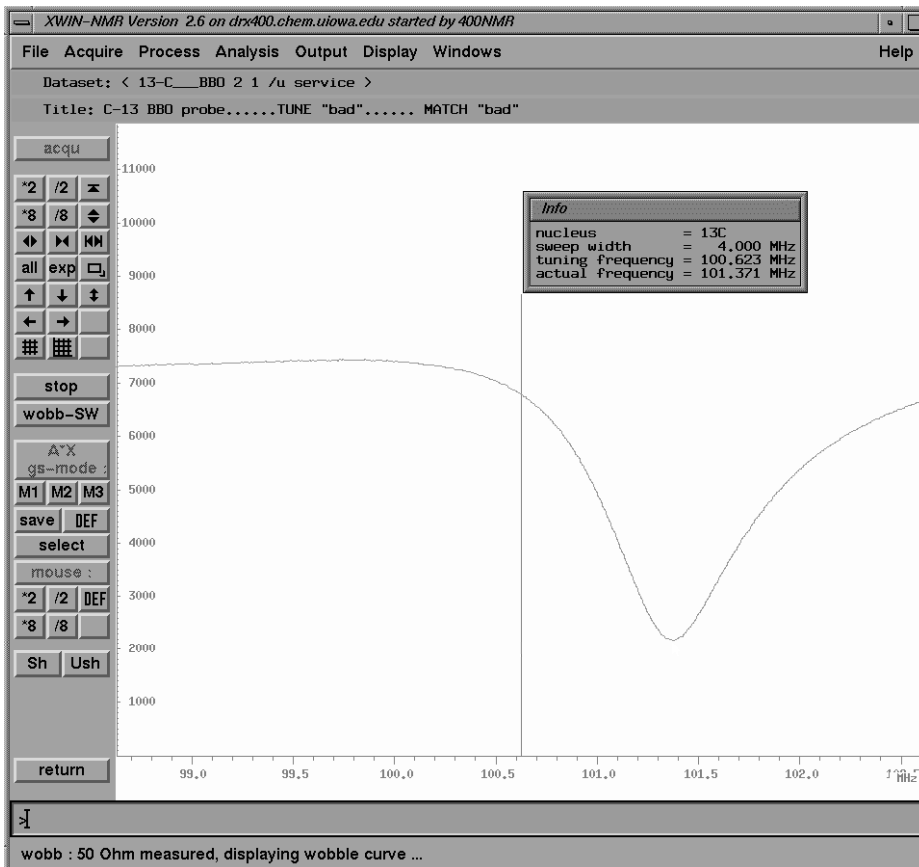


Open filename 13-C\_\_\_BBO



Display the Acquisition window

## wobb

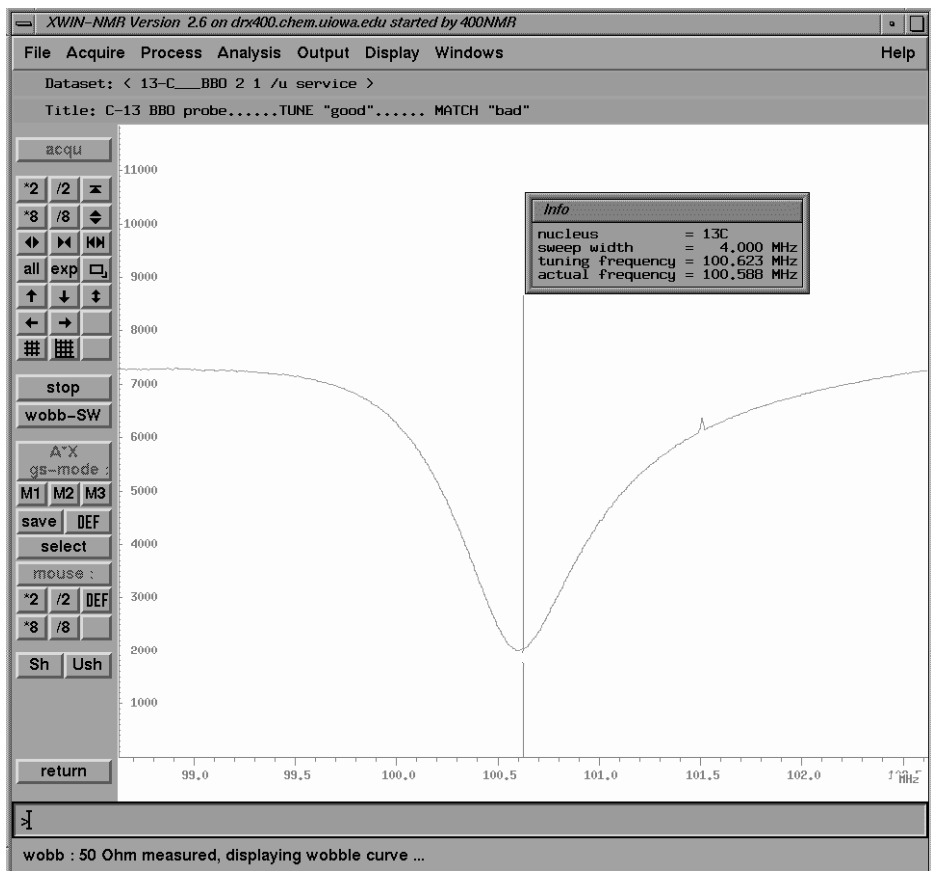


The sample should **NOT** be spinning.

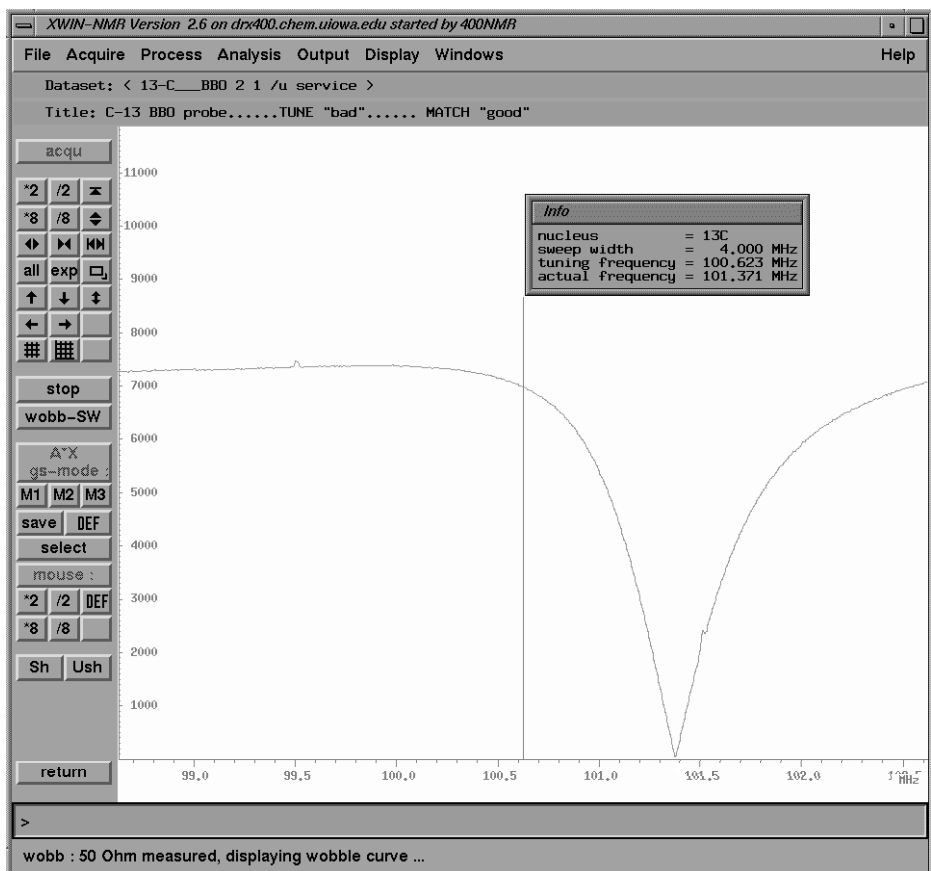
Carefully, **Rotate** the monitor so that you can view the screen while you adjust the TUNE & MATCH slide bars on the Probe.

For the initial adjustments, view the display on the monitor. For the final adjustments, view the **Led** displays on the Pre-Amp.

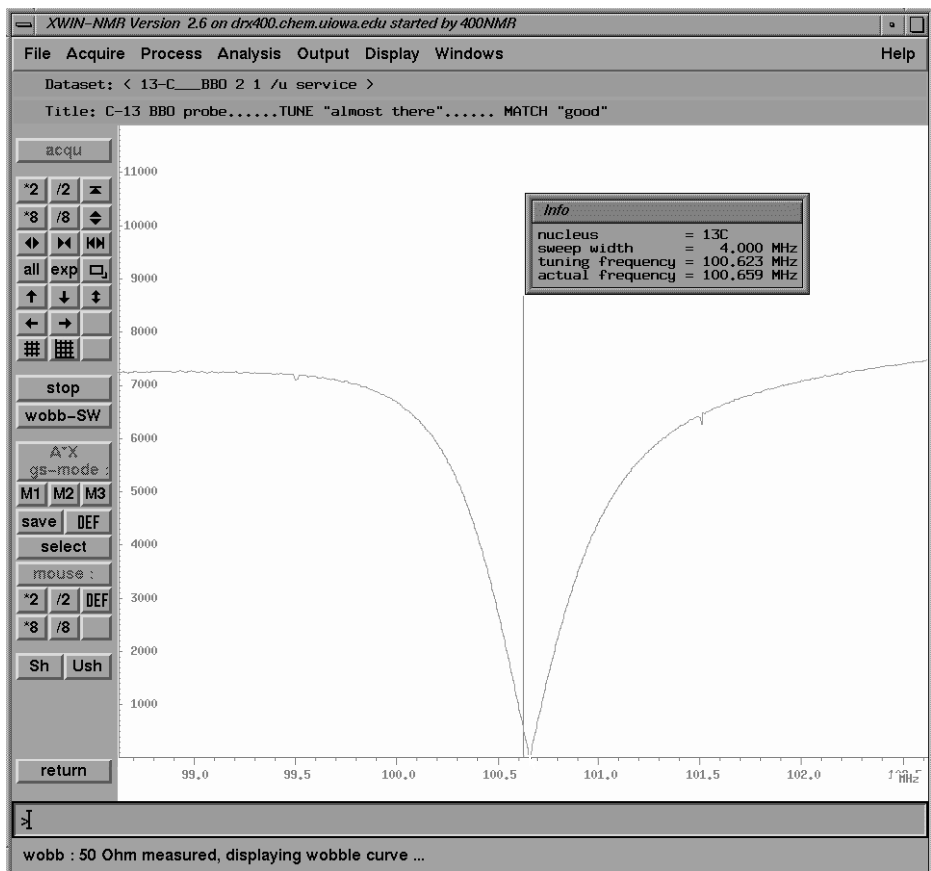
**To start**, adjust the right-most TUNE slide-bar, moving the “dip” toward the center-blue line.



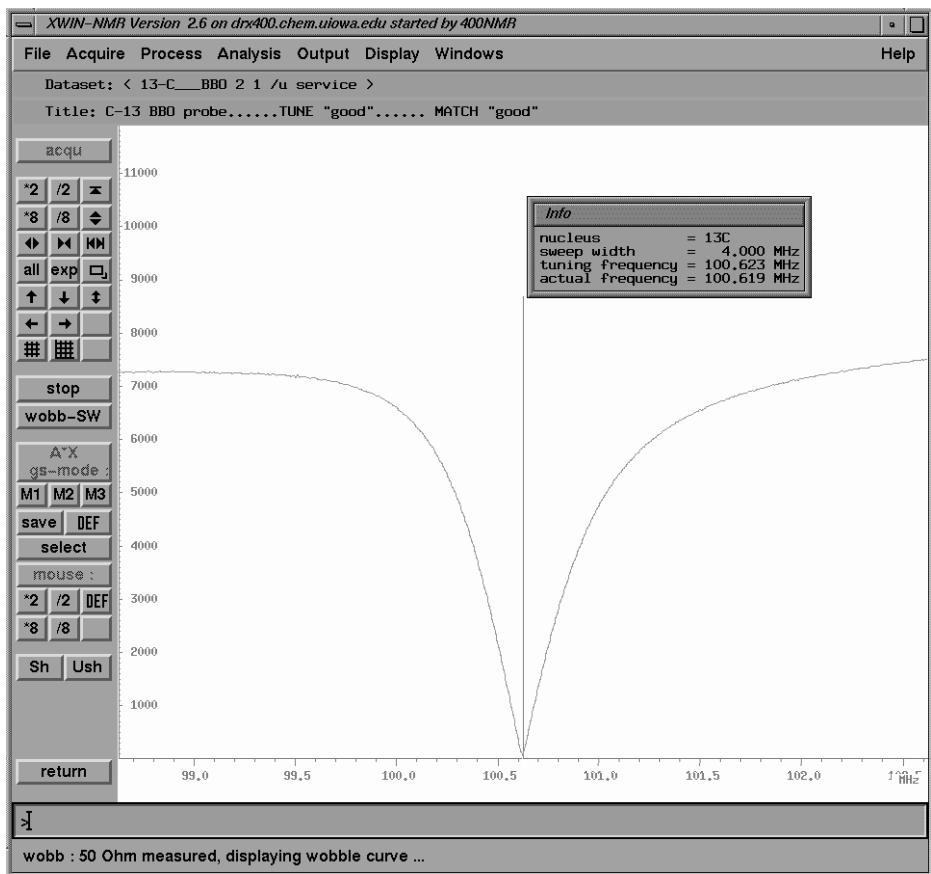
Now that you have adjusted the TUNE slide-bar to move the “dip” to the center-blue line, go to the MATCH slide-bar & adjust it to bring the bottom of the “dip” down to the bottom axis. This will shift left or right the position of the “dip”.



Now that you have brought the “dip” down to the bottom axis with the MATCH slide-bar, go back to the TUNE slide-bar & bring the “dip” back to the center-blue line.



In this picture, the TUNE slide-bar still needs a little bit more adjustment to place the bottom of the "dip" at the center-blue line.



Now the bottom part of the "dip" is at the center-blue line and both TUNE & MATCH are properly adjusted.

**On the Pre-Amp display.....**  
 For the horizontal display make sure only **1** green-Led is lit.

For the vertical display, **no more than 3** green-Leds should be lit. If you can get only **2** green-Leds lit up, that is even better.

-----  
 Push **CHANNEL SELECT** button & adjust **<sup>1</sup>H TUNE & MATCH**

stop