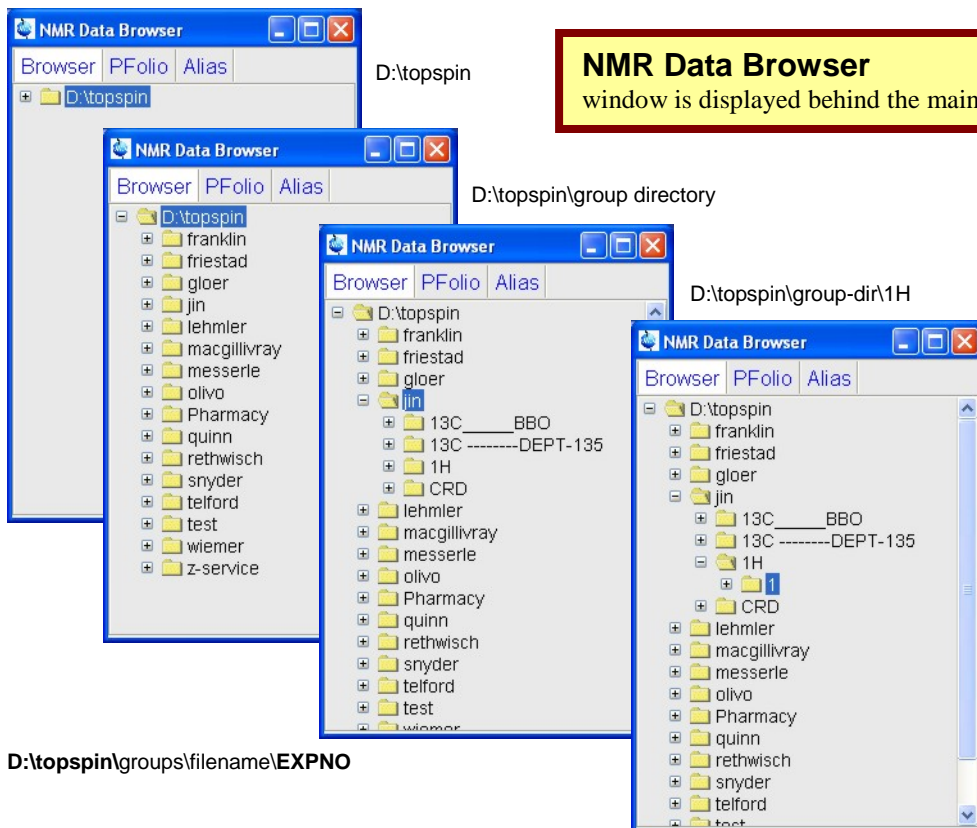


Browse to “group” directory in TopSpin



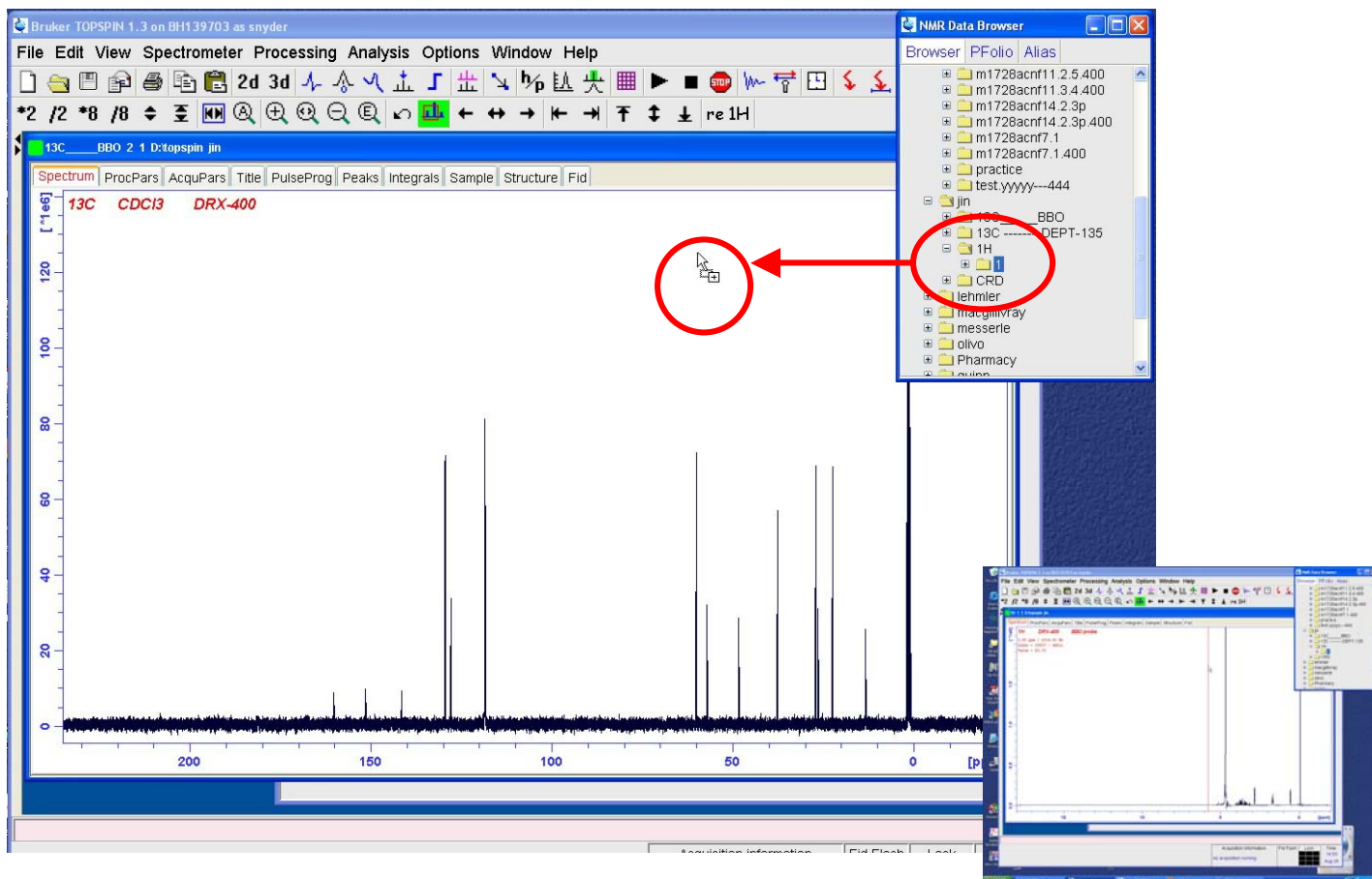
NMR Data Browser
window is displayed behind the main “TopSpin Display” window.

Click on **+** button to expand directory listing.

D:\topspin.....
.....'group directory'.....
.....'filename'..

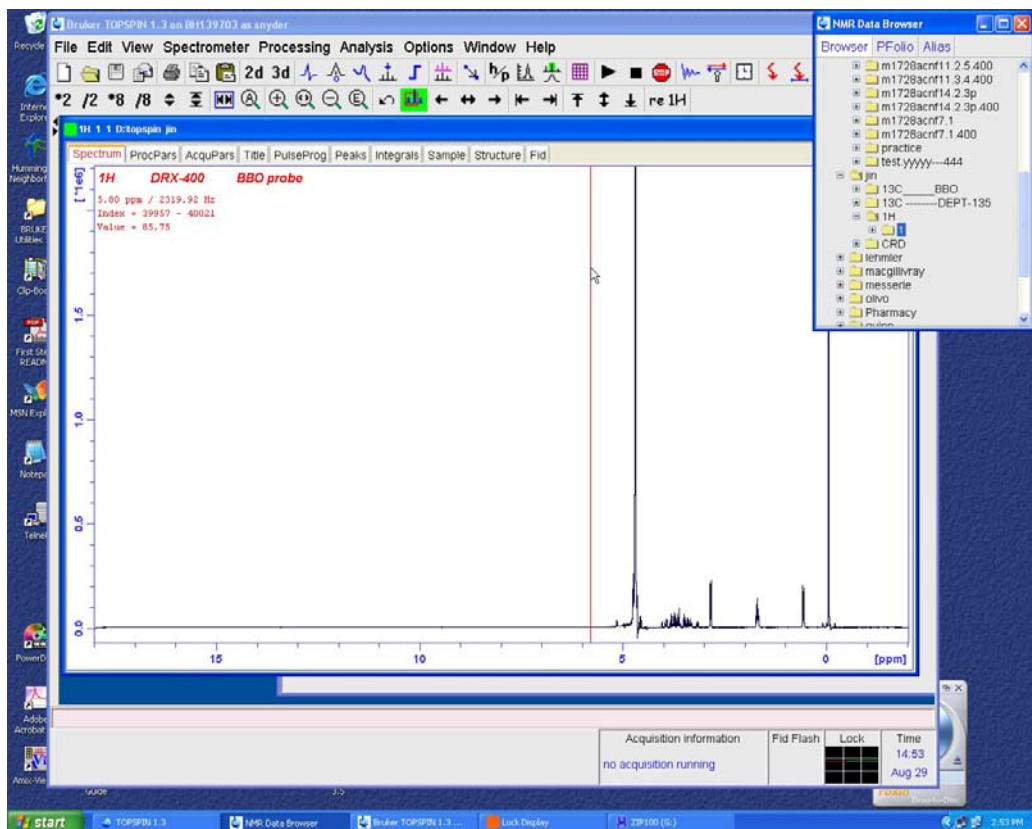
For the **1H** file
Drag the folder **1**

....into an open data window in the TopSpin display.



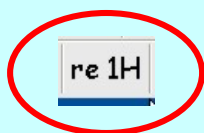
Browse Continued.....

Now, the file & expno, that was dragged into data window, is now displayed in the data window where it was released.



If the **open-data file** displayed is already in the proper **Group directory**.

Click on the **re 1H** button to read in the 1H file

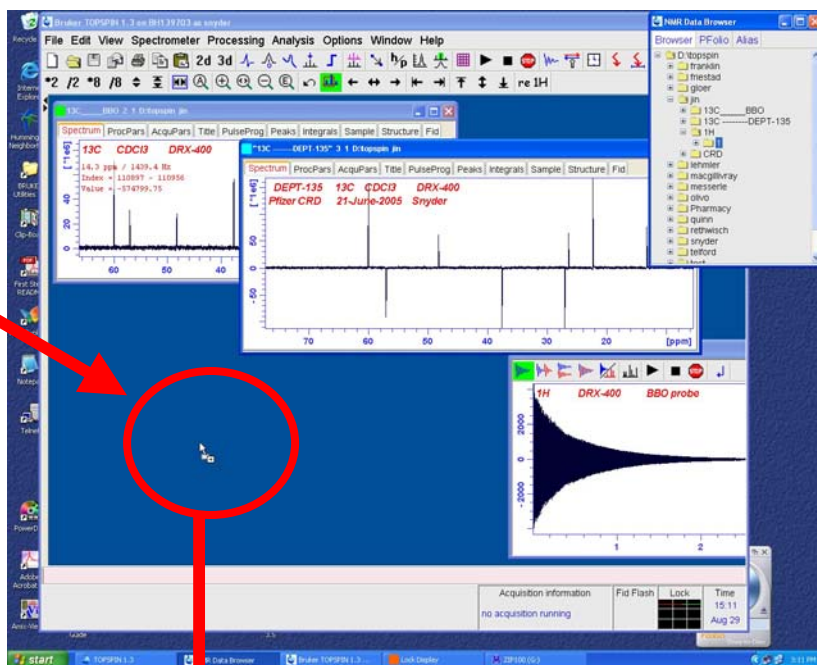
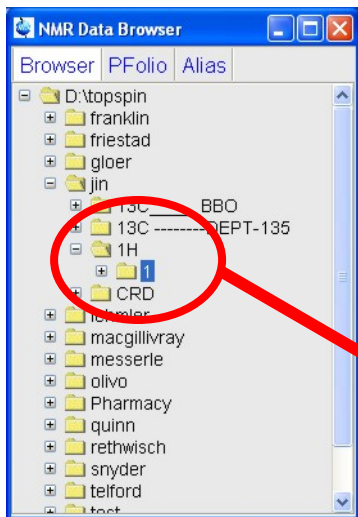


Another file--open Option.....

To display multiple data files at the same time

Browse Continued.....

Another file--open Option.....



Click on **+** button to expand directory listing.

d:\topspin...
.....'group directory'...
.....'filename'..

Drag an 'EXPNO' into an open area in the TopSpin display. This will create an additional open data window.

Drag EXPNO into an open area in the TopSpin display and an additional data-window is opened with the file+expno chosen.

