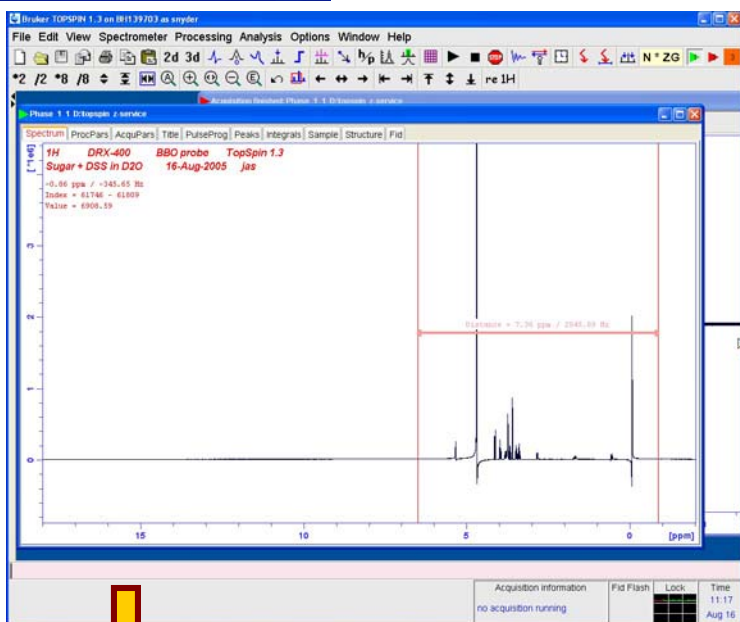
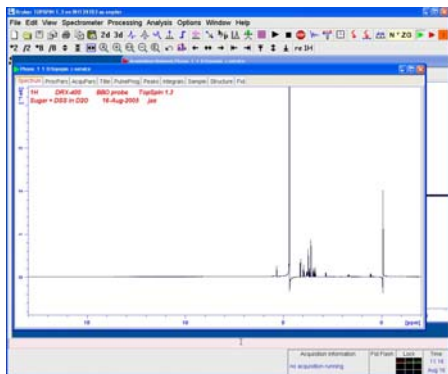
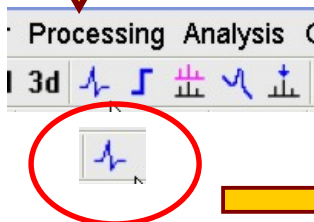


# Expand & **Phase** correct the spectrum in TopSpin



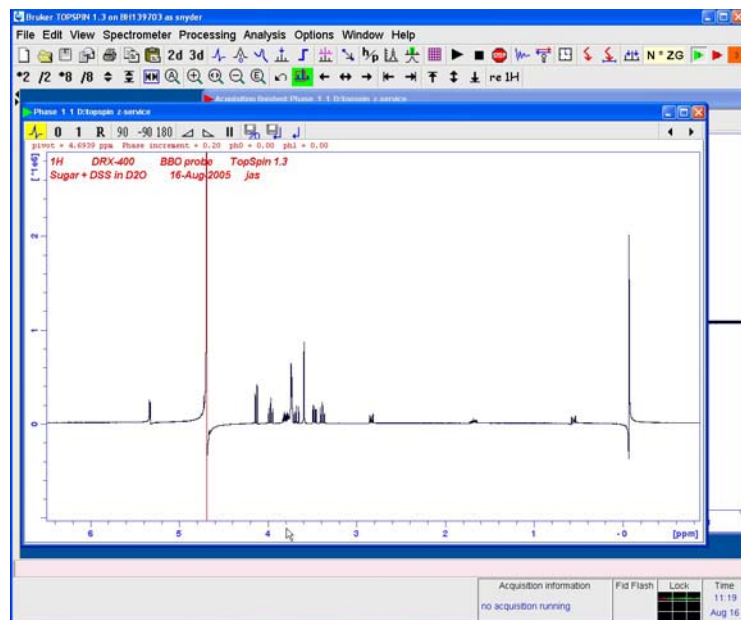
Expand to peaks region

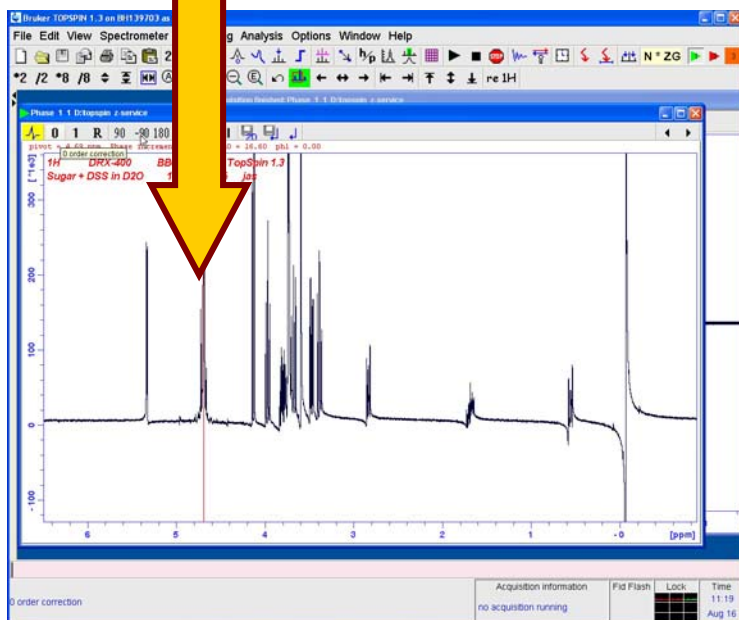
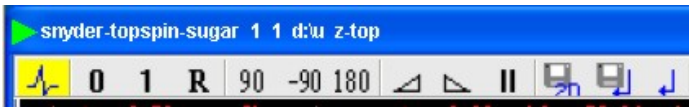
1. Hold down Mouse-1
2. Drag Mouse-1 to the side
3. Notice the "blue" Distance line
4. Release Mouse-1
5. Software now expands to new spectral display region



Click on **Phasing** button

The Tallest peak in the displayed region will be defined as the "0-order" phase point. A vertical "red" line will identify this peak.

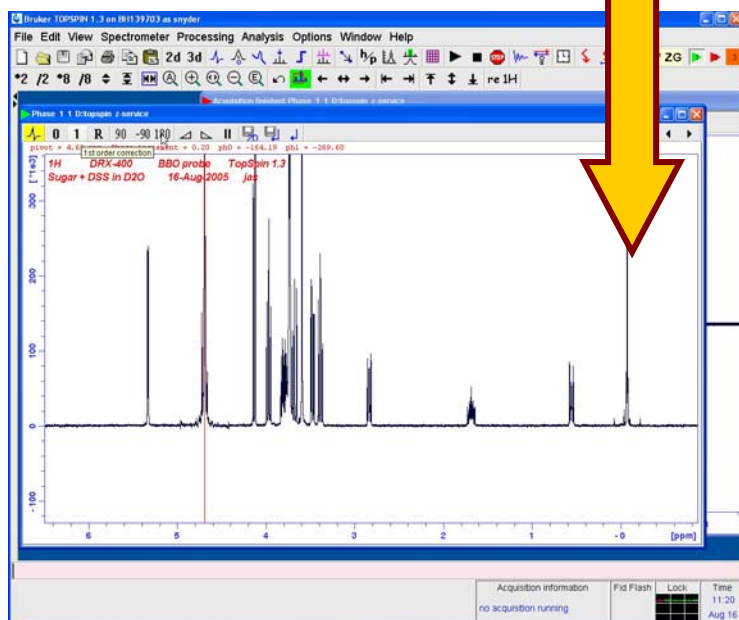




**0** button

While holding down on Mouse-1,  
Adjust the phasing of the peak(s) near  
the vertical red line (software picks the tallest  
peak as the zero-order phase point.)

*In this example, peak at 4.8 ppm*



**1** button

While holding down on Mouse-1,  
Adjust the phasing of the peaks  
farthest away from the vertical  
red line.

*In this example, peak at 0 ppm*

When finished phasing.....  
Click "Save & Return" button

