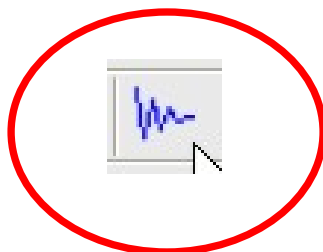


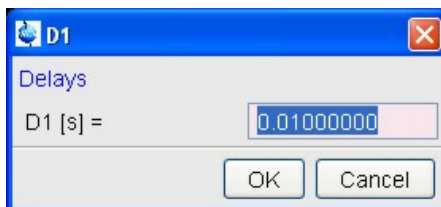
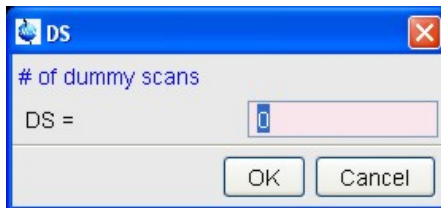
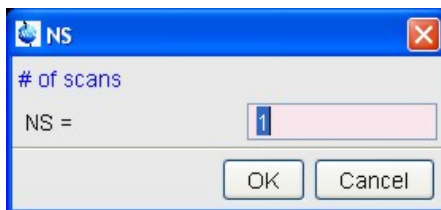
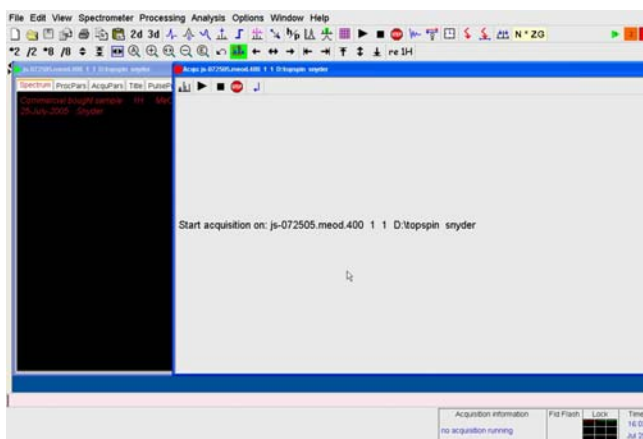
Spin = on RGA in TopSpin

Spin Button “on”

bsms keypad button



Open Acquisition Display Window [acqu]



These are the Default values stored in the **1H** file, Expno 1

These default parameters allow us to quickly acquire one scan, process, & check the quality of the shimming.

After we confirm that the shims settings will yield a high-quality spectrum, parameters can be changed to yield good S/N (signal to noise) and integration values.

Spin, rga, Zg Continued.....

ii

keyboard entry

May hear a **CLICK** as Probe switches in selecting nucleus slide-bar tuning positions. **Wait for II to finish.**

rga

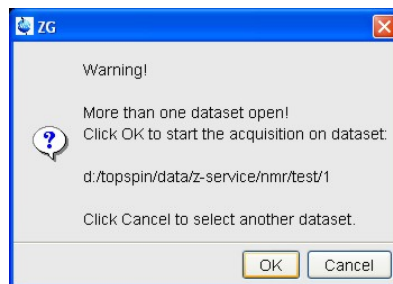
keyboard entry

.....*Wait for rga to finish* *Wait for rga to finish*.....

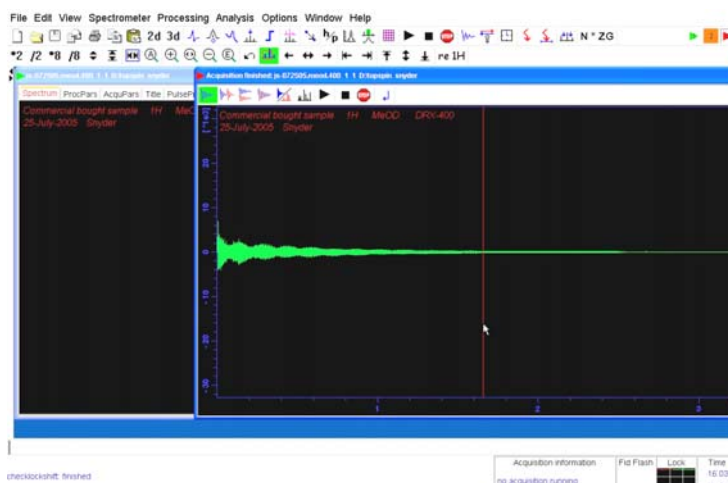
Zg

keyboard entry

Sometimes, this “Caution” window will display if more than one dataset is open & displayed.



Should now see an FID in the Acquisition window



efp

keyboard entry