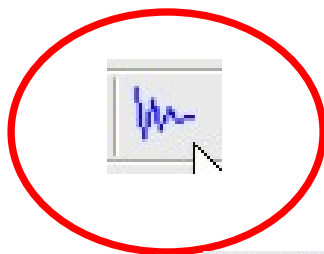
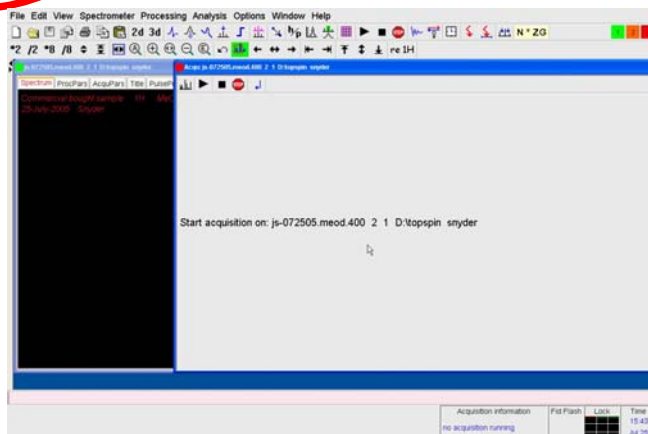


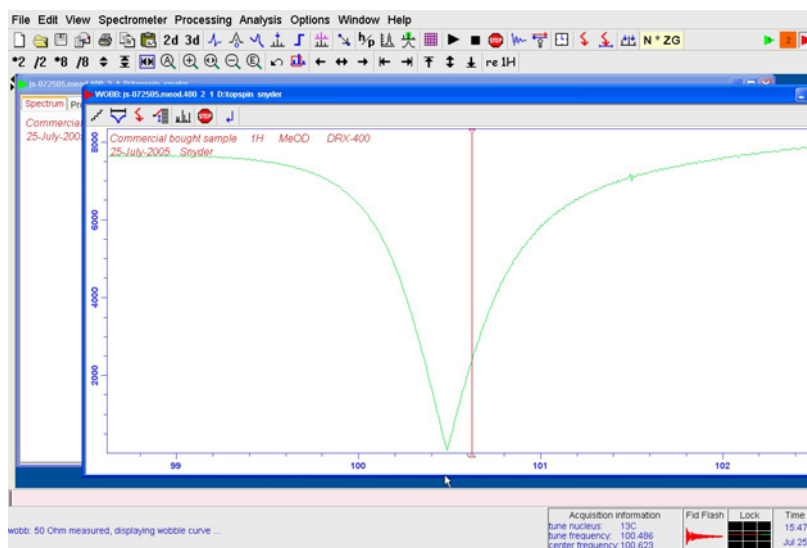
# Wobb to Tune $^{13}\text{C}$ then $^1\text{H}$ in TopSpin



Open Acquisition Display Window [acqu]



wobb



Rotate the LCD display, so that it can be viewed while at the magnet.

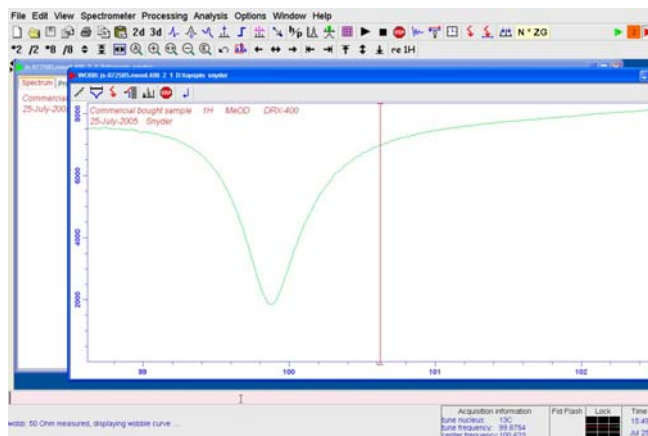
Adjust  $^{13}\text{C}$  Tuning & Matching slide-bars

**Tuning**     *upper set of 4 slide-bars*  
**Matching**     *lower set of 3 slide-bars*

# Wobb $^{13}\text{C}$ .....

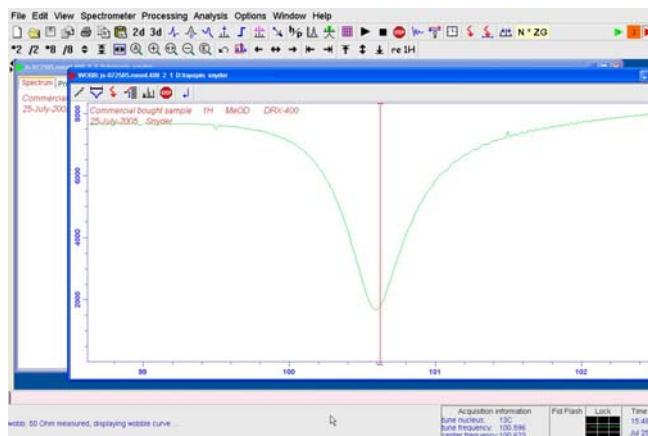
Tuning = "very bad"  
Matching = "very bad"

**Adjust Tuning to bring DIP to center**



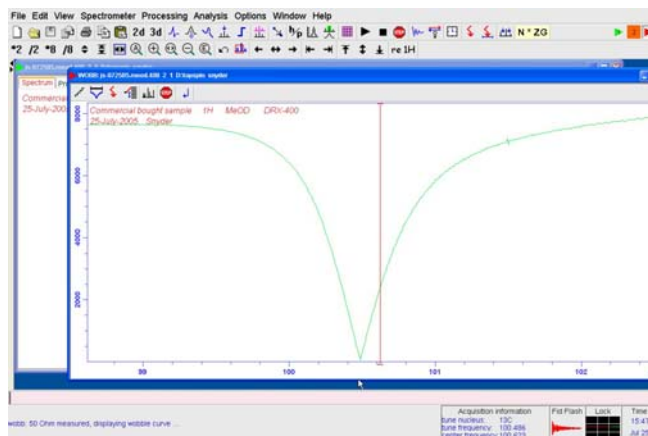
Tuning = "good"  
Matching = "bad"

**Adjust Matching to bring DIP down to axis**



Tuning = "bad"  
Matching = "good"

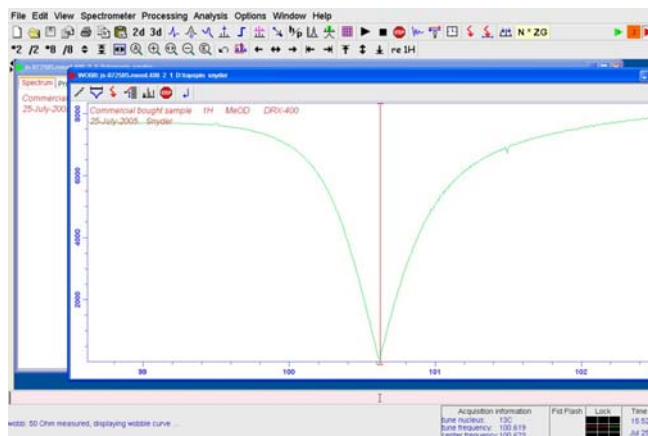
**Adjust Tuning to bring DIP back to center**



Tuning = "good"  
Matching = "good"

**Press Channel Select button to switch over to start the 1H wobb.**

Backside of magnet. Tuning rod is just slightly longer than the Matching rod.  
(Rotate/turn the rods)



# Wobb $^1H$ .....

## Backside of magnet.

Tuning rod is just slightly longer than the Matching rod.

(Rotate/turn the rods)

**Tuning** -- Rotate / Turn in the direction that the LED display lights indicate.

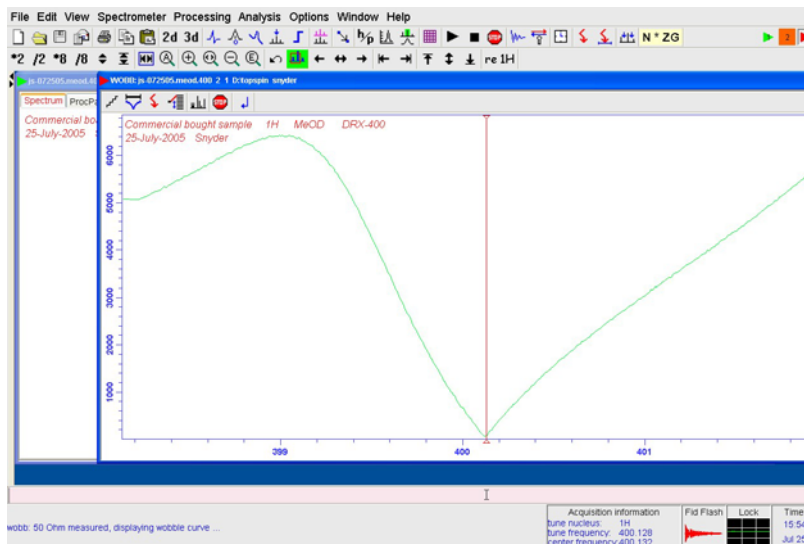
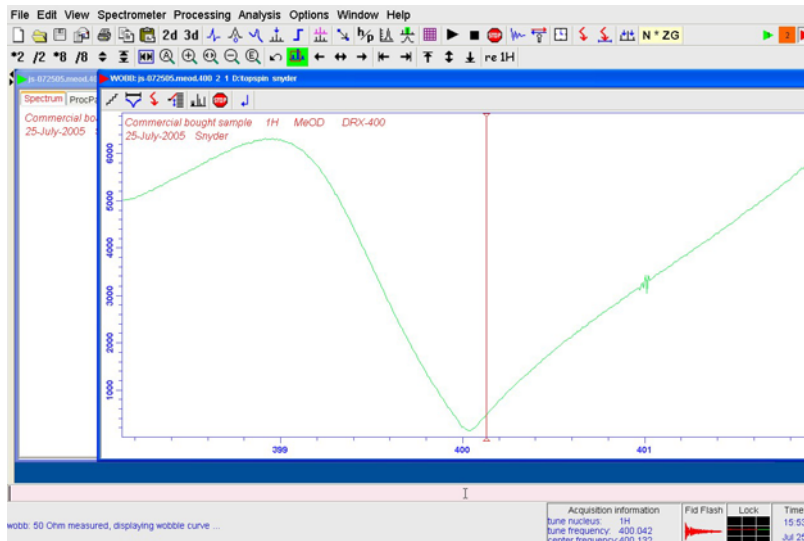
**Matching** -- *if needed*.....

Small Turn

more Tuning LEDs will display

Re-optimize Tuning

Is Matching 'Better' or 'Worse' ?



stop